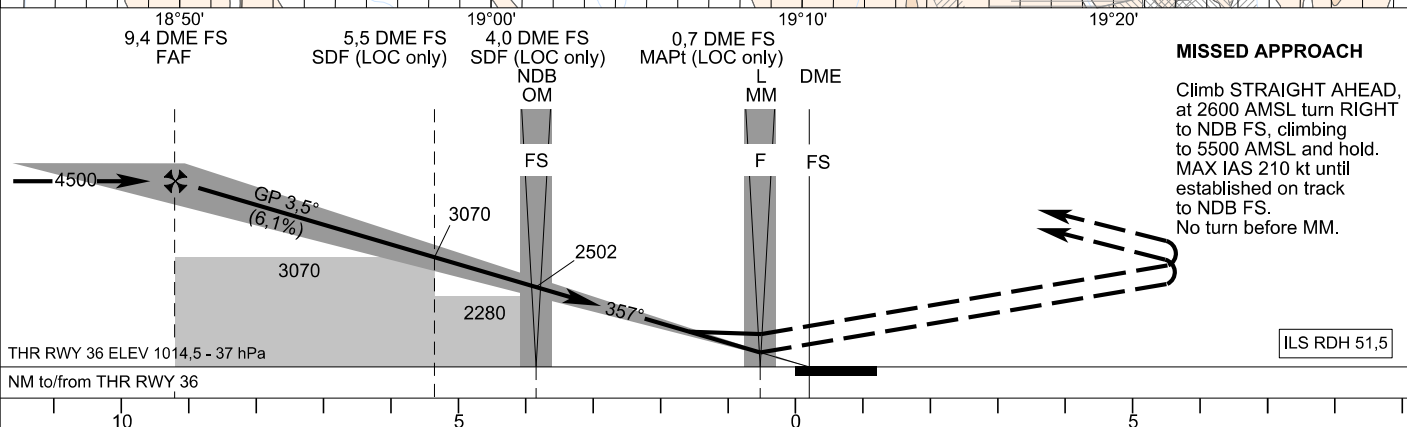
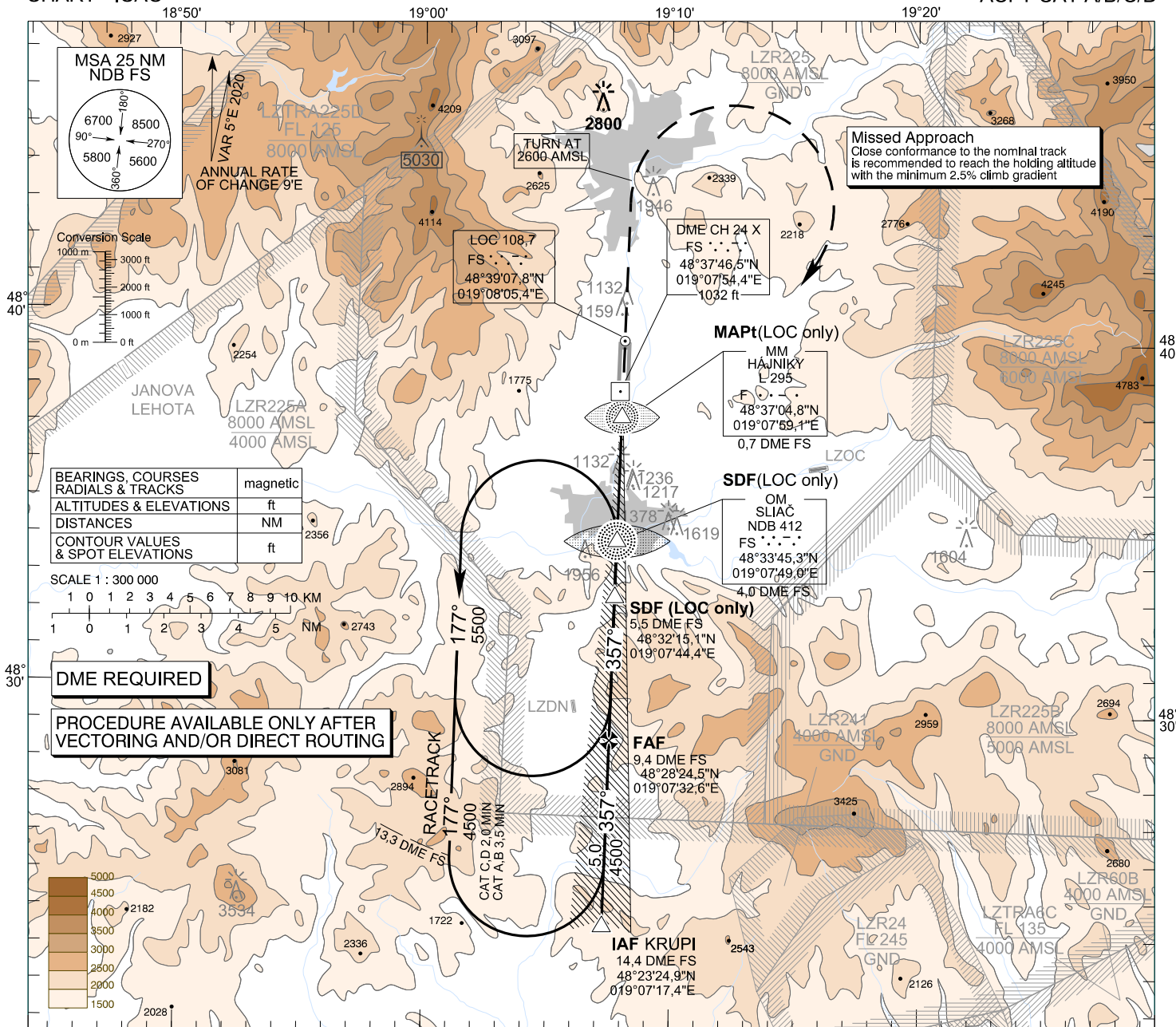


**INSTRUMENT
APPROACH
CHART - ICAO**

TRANSITION ALTITUDE
10 000 ft
AD ELEV 1044,0 - 38 hPa
THR RWY 36 ELEV 1014,5 - 37 hPa

SLIAČ APPROACH/RADAR 119,155
SLIAČ TOWER 122,905

**SLIAČ (LZSL)
ILS CAT I or LOC Y RWY 36
ACFT CAT A/B/C/D**



Straight-In Approach	OCA (OCH)	ASC	A				B				C				D			
			2.5%	5.0%	2.5%	5.0%	2.5%	5.0%	2.5%	5.0%	2.5%	5.0%	2.5%	5.0%	2.5%	5.0%		
CAT I	2.5%	ft	1763 (749)	1777 (763)	1787 (773)	1800 (786)	1763 (749)	1777 (763)	1787 (773)	1800 (786)	1763 (749)	1777 (763)	1787 (773)	1800 (786)	1763 (749)	1777 (763)	1787 (773)	1800 (786)
without SDF	5.0%	ft	1176 (162)	1186 (172)	1202 (188)	1220 (206)	1176 (162)	1186 (172)	1202 (188)	1220 (206)	1176 (162)	1186 (172)	1202 (188)	1220 (206)	1176 (162)	1186 (172)	1202 (188)	1220 (206)
with SDF	2.5%	ft			3070 (2056)				3070 (2056)				3070 (2056)				3070 (2056)	
without SDF	5.0%	ft			1940 (926)				1940 (926)				1940 (926)				1940 (926)	
with SDF	5.0%	ft			3070 (2056)				3070 (2056)				3070 (2056)				3070 (2056)	
with SDF	5.0%	ft			1520 (506)				1520 (506)				1520 (506)				1520 (506)	
Circling (* see Note)		ft		2410 (1366)		2810 (1766)		2840 (1796)										

MISSED APPROACH
Climb STRAIGHT AHEAD, at 2600 AMSL turn RIGHT to NDB FS, climbing to 5500 AMSL and hold. MAX IAS 210 kt until established on track to NDB FS. No turn before MM.

CHANGES: new chart