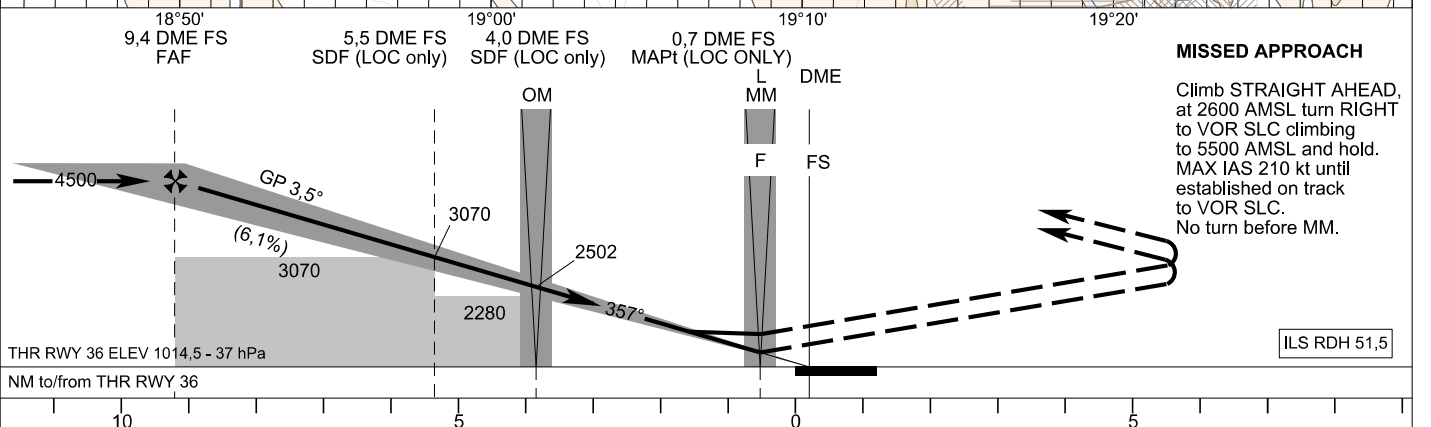
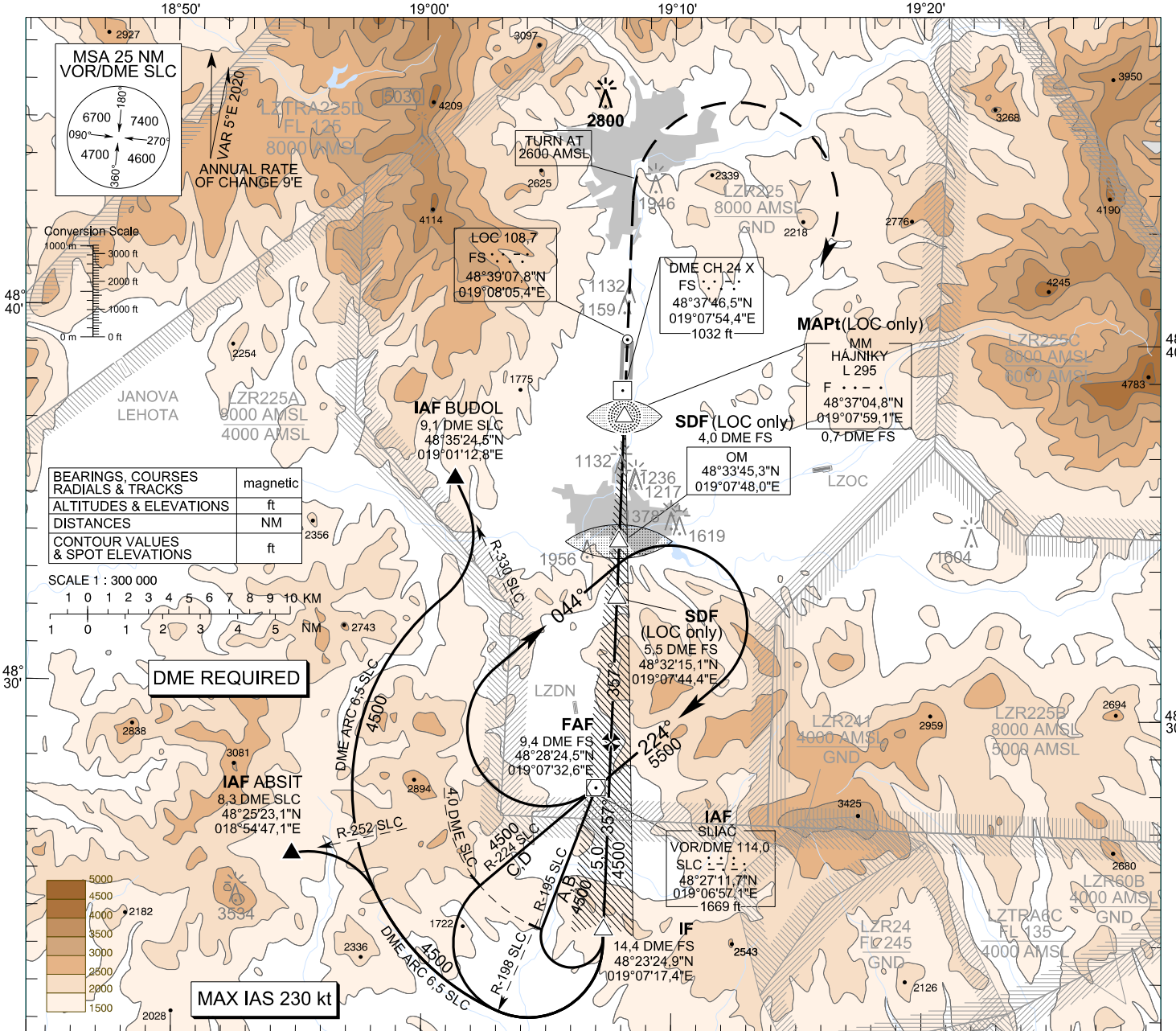


**INSTRUMENT
APPROACH
CHART - ICAO**

TRANSITION ALTITUDE 10 000 ft
AD ELEV 1043,8 - 38 hPa
THR RWY 36 ELEV 1014,5 - 37 hPa

SLIAČ APPROACH/RADAR 119,155
SLIAČ TOWER 122,905

**SLIAČ (LZSL)
ILS CAT I or LOC Z RWY 36
ACFT CAT A/B/C/D**



MISSED APPROACH
Climb STRAIGHT AHEAD, at 2600 AMSL turn RIGHT to VOR SLC climbing to 5500 AMSL and hold. MAX IAS 210 kt until established on track to VOR SLC. No turn before MM.

| OCA (OCH) | ASC | A | | | | B | | | | C | | | | D | | | | |
|-----------------------|-------|-------------|------|-------------|------------|-------------|-------------|-------------|----|------|------|----|----|------|------|----|----|--|
| | | 2,5% | 5,0% | ft | NM | 2,5% | 5,0% | ft | NM | 2,5% | 5,0% | ft | NM | 2,5% | 5,0% | ft | NM | |
| Straight-In Approach | CAT I | 2,5% | ft | 1763 (749) | 1777 (763) | 1787 (773) | 1800 (786) | | | | | | | | | | | |
| | | 5,0% | ft | 1176 (162) | 1186 (172) | 1202 (188) | 1220 (206) | | | | | | | | | | | |
| | LOC | without SDF | 2,5% | ft | | | 3070 (2056) | | | | | | | | | | | |
| | | with SDF | 2,5% | ft | | | 1940 (926) | | | | | | | | | | | |
| Circling (* see Note) | | without SDF | 5,0% | ft | | | 3070 (2056) | | | | | | | | | | | |
| | | with SDF | 5,0% | ft | | | 1520 (506) | | | | | | | | | | | |
| | | | ft | 2410 (1366) | | 2810 (1766) | | 2840 (1796) | | | | | | | | | | |