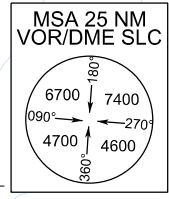
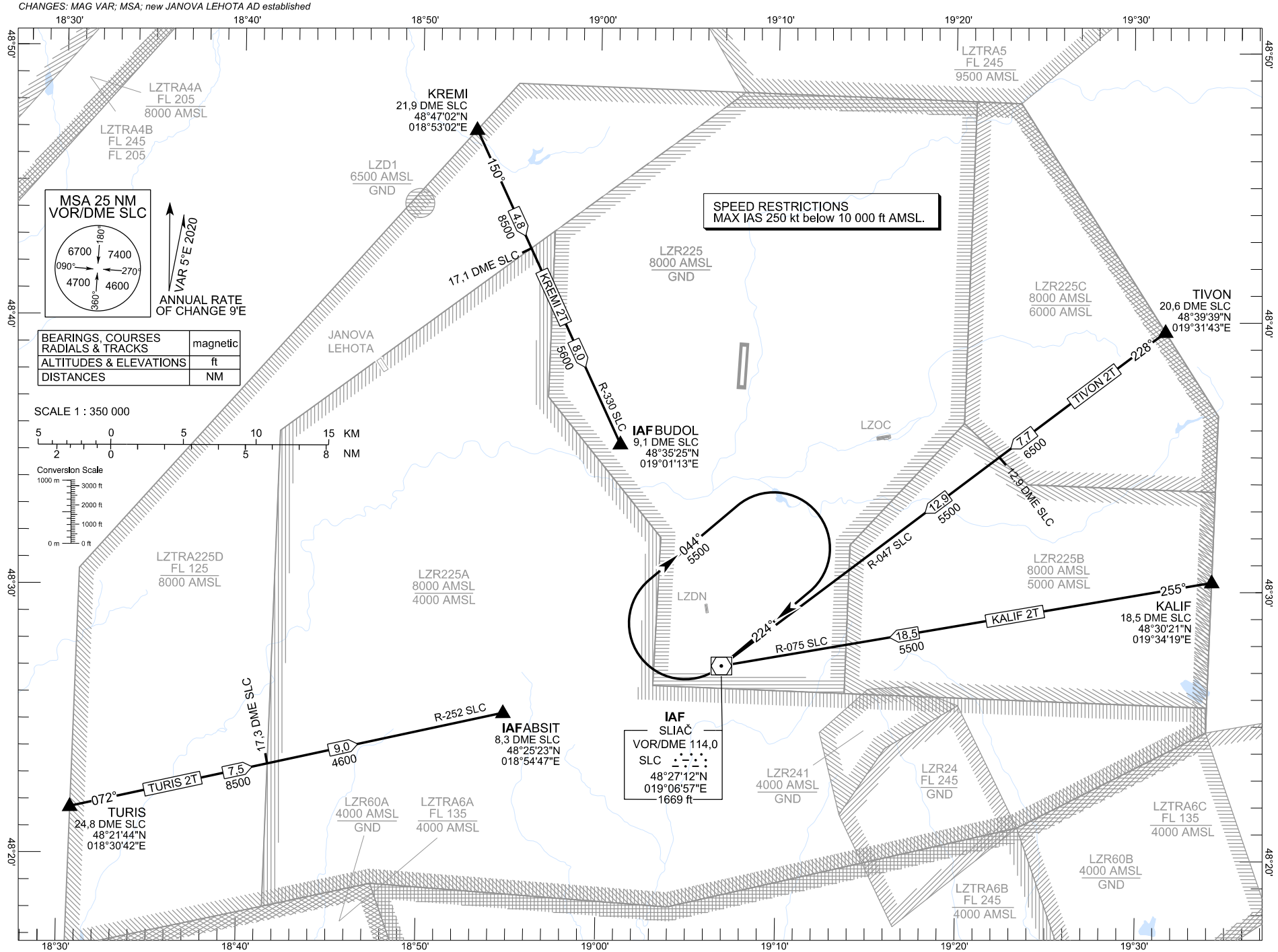


STANDARD ARRIVAL CHART -
INSTRUMENT (STAR) - ICAO

TRANSITION ALTITUDE
10 000 ft

SLIAČ RADAR
SLIAČ TOWER
119.155
122.905

SLIAČ (LZSL)
STAR RWY 36
ACFT CAT A/B/C/D



BEARINGS, COURSES RADIALS & TRACKS	magnetic
ALTITUDES & ELEVATIONS	ft
DISTANCES	NM

SCALE 1 : 350 000

